

World Heritage and sustainable development: challenges for participation?



Conference: Transboundary European Heritage - Topic for UNESCO
Associated Schools', 19/20 December 2019, Berlin

Friederike Hansell M.A., Saxon World Heritage Coordination

Saxony and its Transboundary World Heritage Sites

- located in a border triangle – Saxon/Poland/Czech Republic
- maintains good relations with its neighbouring countries
- two transboundary World Heritage sites



Muskauer Park/Park Mużakowski (2004), Polish-German WHS



Erzgebirge/Krušnohoří“ Mining Region (2019), German-Czech WHS (Foto: J. Kugler/IWTG)

Muskauer Park/Park Mużakowski

...an exceptional example of a European landscape park that broke new ground in terms of human-made landscape design.

Erzgebirge/Krušnohoří Mining Region

...an exceptional testimony to the outstanding role and strong global influence of the Saxon-Bohemian Ore Mountains as a centre for technological and scientific innovations from the Renaissance up to the modern era.

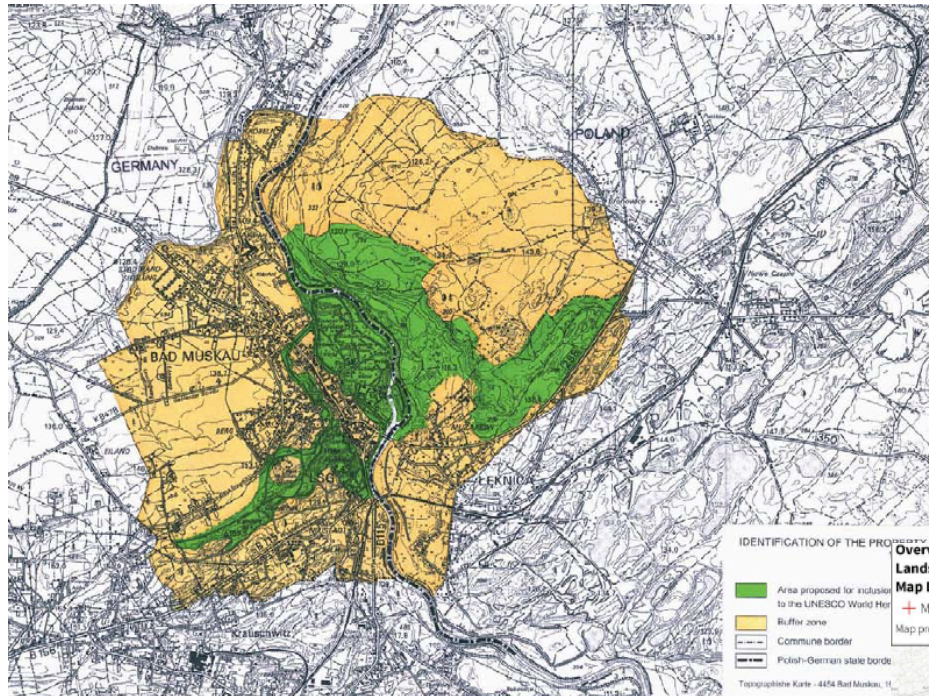
Two countries | One shared heritage

- **Muskauer Park/Park Mużakowski:** 1815 to 1844: landscaped park created by Prince Hermann von Pückler-Muskau
- **Erzgebirge/Krušnohoří Mining Region:** 1168 to 1990 landscape created by mining of several ores
- **Aftermath of WW II:** division of the park along the German-Polish and the region along the German-Czech border
- **1989:** Start of the transboundary cooperation
- **World Heritage Inscription**
 - **2004:** Muskauer Park/Park Mużakowski
 - **2019:** Erzgebirge/Krušnohoří Mining Region

Transboundary World Heritage Sites – features and potential

- possibility to nominate a single property irrespective of current political borders
 - basic requirement: close cooperation of all partners and set up of a joint management
 - Transboundary European WH sites, in particular,
 - strengthen collective responsibility over shared heritage; and
 - foster intercultural dialogue and cross-border cooperation.
- They are visible and tangible witness of how people in Europe have created culture, as well as community, together.
- They symbolise the very idea of international cooperation

World Heritage Sites - characteristics

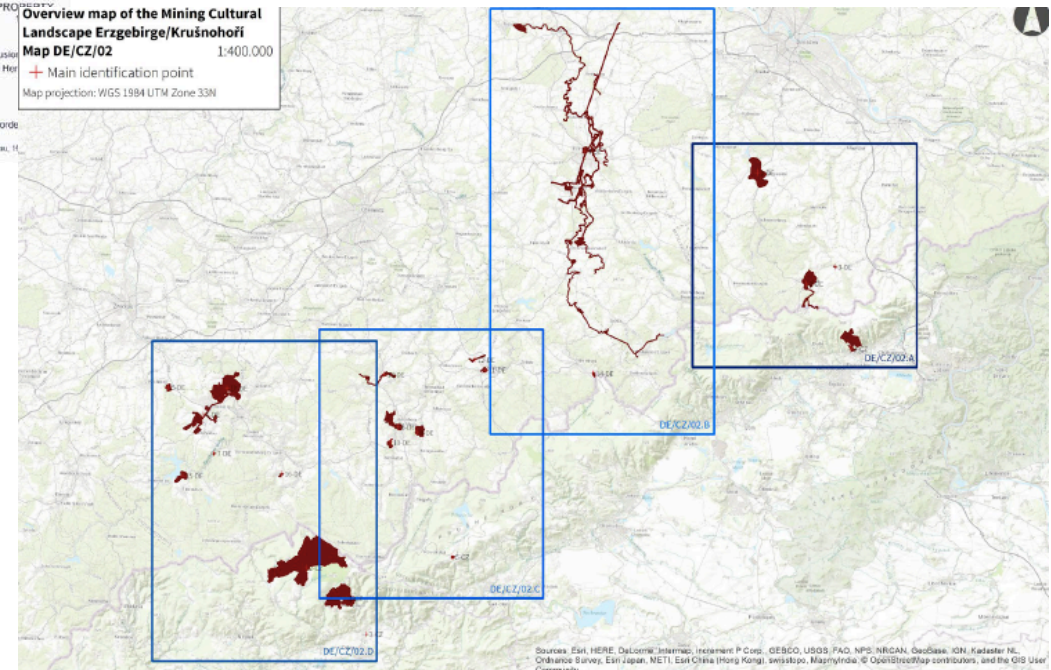


Muskauer Park/Park Mużakowski

- Cultural landscape
- Rural region, Upper Lausatia, located in the Muskauer arch Geoparc
- Joint conservation efforts

Erzgebirge/Krušnohoří Mining Region

- Cultural landscape
- Rural (mountain) region
- Regional scale
- Serial, 22 component parts



World Heritage and sustainable development



World Heritage as Driving Force

- **for inclusive social development including**
- **community involvement**
 - key role in maintaining and managing heritage;
 - local stewardship of heritage has the capacity to empower communities.
- **development of educational activities, both inside and outside of the classroom**
 - ensuring the transmission to future generations of the cultural and natural heritage;

Case study UNESCO-Welterbe Erzgebirge/Krušnohoří Mining Region



Inscription 6 July 2019



Broad range of stakeholders

- local, regional national authorities,
- mining authority,
- monument and nature protection authorities,
- responsible ministries,
- (private) owners,
- (mining) associations,
- expert staff (visitor mines, museums),
- citizens

→ aim: involvement of all stakeholders
in the nomination process

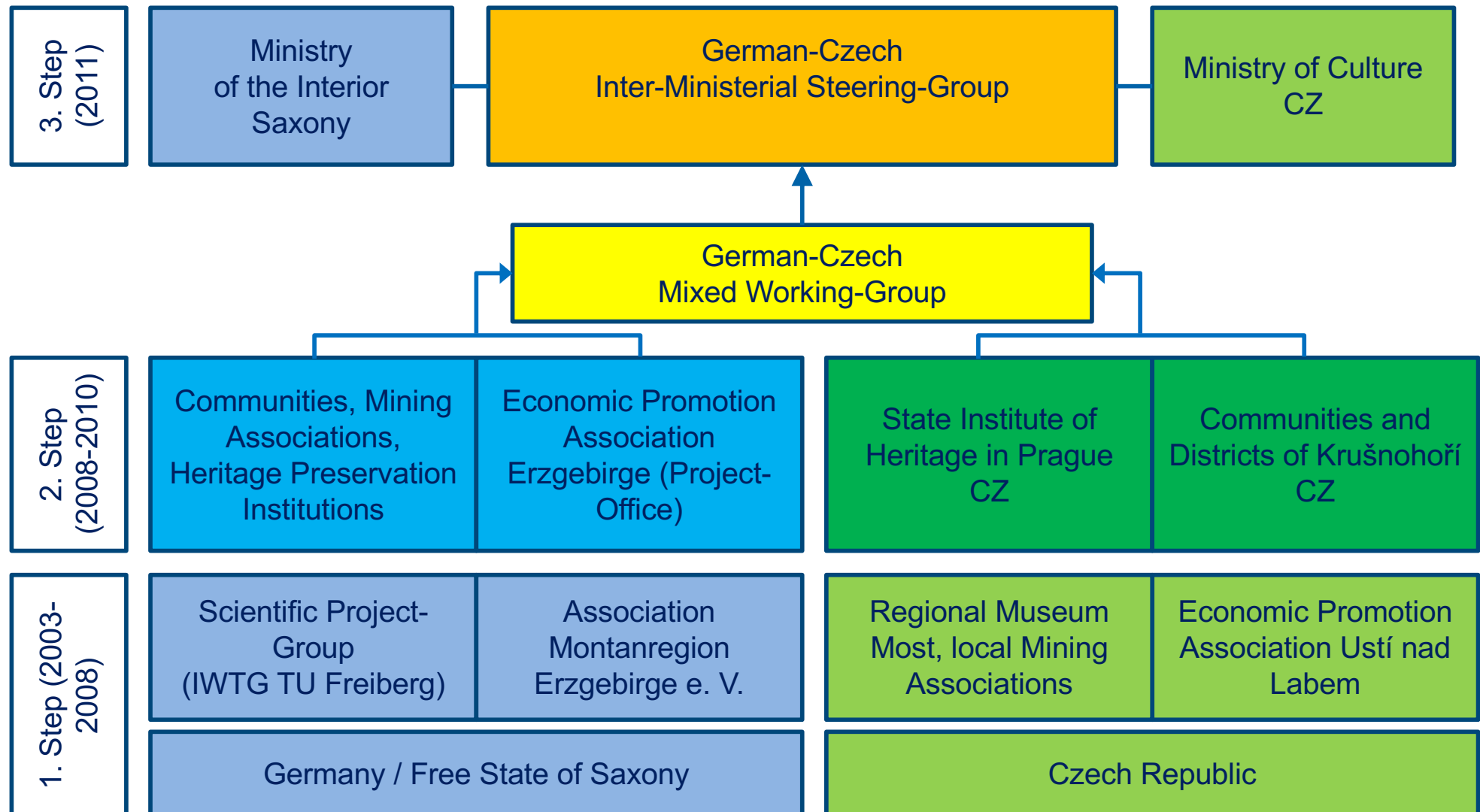
Nomination process: overall objective

**Preservation of the tangible mining heritage
and associated intangible heritage**

- together
- common understanding
- active participation

Together! Across borders!

Stakeholder involvement: Bottum-up process



Challenges: mining associations

- increase of membership after 1990, since the early 2000 decline in membership due to a lack of newcomers
- older age of mining association members

Actions:

- engaging young generations as a key task
- fostering gender equality
- strengthening local empowerment

Is there a potential for volunteering of (young) people?

- potential of engagement: high 54,1% of the citizens in Saxony would be interested in volunteering
- area of engagement: culture and music is on the third position; the number of volunteers increased over years, however, the willingness to take over leading honorary position decreased
- impulses for engagement: half self-initiated, next to women and persons older than 65, in particular young people between 14 and 29.
- motivation: in particular for young people a certain degree of learning outcome that increases their competencies and skills is important

Education as a focus: Finding and engaging young people

- **Learn engagement early** through school projects and teacher training programmes
- **Increase visibility for younger generations** through social media as well as topics and offers that interest young people
- **Increase the degree of learning outcome for young people** e.g. through teaching specific craftsmen techniques
- **Be flexible in your volunteer work** through project-based activities and enable young people to actively participate and develop new ideas

World Heritage

... enables to increase the interest of young generations in their own heritage and beyond!

...provides new and a broader range topics for the development of offers and inclusion in regular school lessons

...allows to realise the UNESCO's educational mission locally

Communication heritage values

Interreg V A – project

**Our *World*Heritage:
The Cultural Mining
Landscape
Erzgebirge/Krušnohoří**

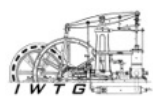
Target groups

- mining association, expert staff and teachers
- pupils and students



Europäische Union. Europäischer
Fonds für regionale Entwicklung.
Evropská unie. Evropský fond pro
regionální rozvoj.

SN CZ
Alkoj kooperace. Hala Náchod.
Interreg V A / 2014 – 2020



Aiming at

- establishment of a common transboundary interpretation strategy to communicate our mining heritage;
- anchoring of mining heritage in educational activities and programmes (of mining sites, museums, schools, universities, etc.);
- enhancing of the cooperation between museums, mining sites and educational institutions;
- and enabling of professional stakeholders to implement educational programmes.

Transboundary Heritage Education

- Evaluation of all existing educational activities
- Development of information and educational programmes

Capacity Building

- Training courses for site managers, expert staff and teachers about mining heritage (and World Heritage)

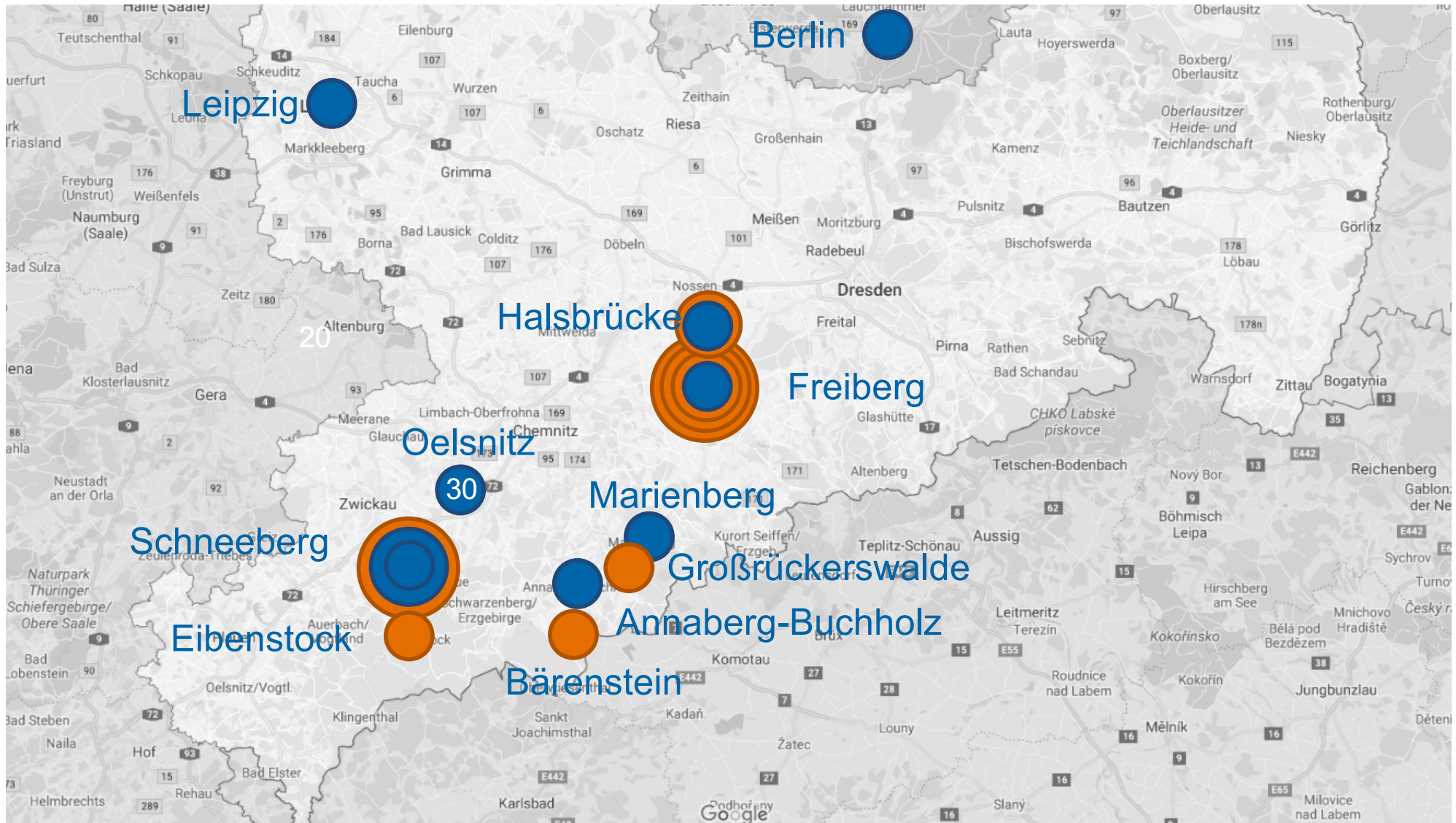
Educational activities

- School projects
- Study courses at universities

Communication

- Organisation of transboundary and local events
- Development of e-learning platforms

World Heritage rises interest ...



Specific projects – art project „Mining World“

Vielen Dank an alle Schüler*innen und Lehrer*innen für Eure Ideen und Arbeiten!

Montane Wissenswelten – Ein Kunstprojekt für Schulen

„Montanregion Marienberg“ war das Thema einer Projektschöpfung im Juni 2018 des Marienberger Gymnasiums unter der Leitung des Kunstlehrers Stefan Bömer. Die Schüler*innen setzten sich hier künstlerisch und kreativ mit dem Thema Montanregion Erzgebirge Kruft und der Bewerbung zum UNESCO-Welterbe auseinander. Ergebnis war eine nach dem Prinzip der „Jaher Art“ gestaltete Collage, die die Eindrücke und das Bild der Schüler*innen von ihrer Bergbauregion und ihrem Erbe widerspiegelt.

Projektidee

Inspiziert von den Erfahrungen beim Umgang mit Motiven der eigenen Bergbauregion entstand die Idee, im Rahmen der anstehenden Entscheidung über die Eintragung der Montanregion Erzgebirge Kruft in die Liste des UNESCO-Welterbes im Juli 2019 gemeinsam mit Schüler*innen anderer Schulen des Erzgebirges eine „Montane Wissenswelt Erzgebirge“ zu gestalten.

Unser Zeichen bedeutet gleichzeitig, sich mit dem Dargestellten auf unseren Blicken zu beschäftigen. Wir begreifen mehr und mehr den Sinn, warum Marienberg Teil der Welt-Erbschaft geworden ist. Es entstand die Idee, auch andere Schüler zum Mitmachen einzuladen und vom Welt-Erbschaftsprojekt des Erzgebirges zu begeistern. (Schüler*in)

Ihr wart dabei!

Evangelische Schulgemeinschaft Annaberg-Buchholz
Landesgymnasium St. Annen Annaberg-Buchholz
Clemens-Winkler-Gymnasium Aue
Bernhard-von-Cotta-Gymnasium Brand-Erbisdorf
Johann-Gottfried-Harden-Gymnasium Schneeberg
Oberschule Bergstadt Schneeberg
Carl-von-Bach-Gymnasium Stolberg
Gymnasium Duxen
Gymnasium Klaffenbach Olitz

Der außergewöhnliche universelle Wert

Was macht die Montanregion Erzgebirge Kruft in der Weltweit so herausragend? Die Begründung für die Aufnahme in die Welterbeliste ergibt sich aus:

- Den herausragenden technologischen und wissenschaftlichen Errungenschaften, die vom sachsische-berneischen Erberbau ausgingen und die Entwicklungen in anderen Bergbauregionen erheblich beeinflussten.
- Der Herausbildung eines staatlich-kontrollierten Bergbaus, der als Vorbild anderer Bergbauregionen in Europa diente, und zur Etablierung einer auf dem Bergbau beruhenden Kultur führte.
- Der auf der außergewöhnlichen Vielfalt an Erzen und deren Konzentration auf bestimmte Bereiche beruhenden Entwicklung, die bis heute an den Bergstätten und den Bergbaulandschaften sichtbar und so im weltweiten Kontext einzigartig ist.

Wir wollen weitermachen!

Gemeinsam wollen wir unser montanhistorisches Welterbe für die Zukunft schützen und erhalten und jüngere Generationen für ihre montane Geschichte in ihren zahlreichen Facetten sensibilisieren. Wir verbinden dabei immer das Erleben an einem außerschulischen Lernort mit der Vermittlung des UNESCO-Welterbes und der herausragenden Bedeutung des montanhistorischen Erbes.

Der Förderverein Montanregion Erzgebirge e. V. bietet in Zusammenarbeit mit der Welterbe-Projektgruppe am Institut für Industriearchitektur, Wissenschafts- und Technikgeschichte Unterrichtsstunden

Schulprojekte oder -wochen

Lehrerfortbildungen

zu verschiedenen thematischen Schwerpunkten unseres Welterbes an.

Bei Interesse bitte melden unter:
Frederike Hansell, M. A. (Welterbe-Projektgruppe IWTG)
Tel.: 0178 - 7749026
E-Mail: frederike.hansell@iwtg-leipzig.de



Basis for the future educational work

Use of the broad range of topics related to World Heritage and linkage to the school curricula

Technologische Errungenschaften	Wissenschaftliche Errungenschaften	Technologie- und Wissenstransfer
Wasserhebetechnologien	Mineralogie	Ein- und Auswanderung der Bergleute
Abbau-, Aufbereitungs- und Verhüttungstechniken	Metallurgie (Gewinnung und Verarbeitung von Erzen)	Literarische Werke: Agricola „De re metallica“
Vermessung	Lagerstättenkunde/Gesteine	Ausbildungssystem
Geschichte, Physik, Informatik, Mathematik	Geografie, Geschichte, Physik, Chemie	Geschichte, Geografie, Sachkunde

Our conclusion - positive

Successful cooperation with associations and teachers

- highly motivated and engaged
- effective

Increasing awareness for the mining region as a school topic

- high interest for inclusion in the regular school lessons
- in combination with practical experiences through site visits



„Transboundary European World Heritage - a Topic for UNESCO Associated Schools“



<https://worldheritage-education.eu/de#start>



What we would like to achieve

For students: a new view on their home region and increased potential for job alternatives;

For schools: development of a profile with a focus on sustainable vocational education; appreciation of school and education by external partners in the region;

For extracurricular partners: recognising vocational schools and teachers as active and innovative partners;

For the region: recognising potentials for reducing the lack of skilled workers by motivating and engaging of young people as well as for an increase of the attractiveness by training possibilities.



Thank you for your attention!